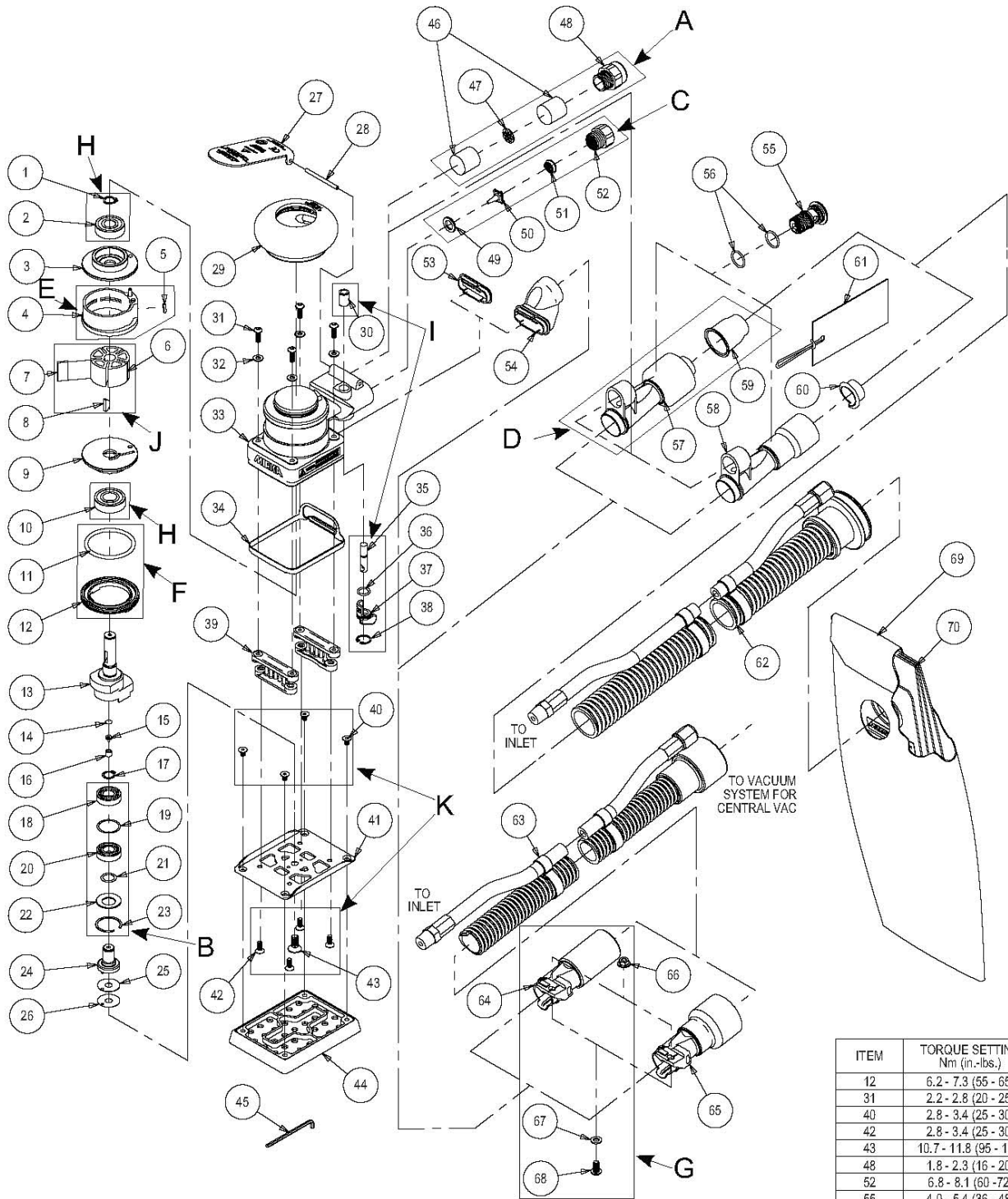


Exploded view for OS 75 x 100 mm



ITEM	TORQUE SETTING Nm (in.-lbs.)
12	6.2 - 7.3 (55 - 65)
31	2.2 - 2.8 (20 - 25)
40	2.8 - 3.4 (25 - 30)
42	2.8 - 3.4 (25 - 30)
43	10.7 - 11.8 (95 - 105)
48	1.8 - 2.3 (16 - 20)
52	6.8 - 8.1 (60 - 72)
55	4.0 - 5.4 (36 - 48)
68	3.4 - 3.9 (30 - 35)

Mirka code	Item	P/N	Description	Qty.
8993019811	H	MPA0799	Endplate Bearing Kit	
	1	MPA0040	EXTERNAL RETAINING RING	1
	2	MPA0021	10 X 26 X 8 BEARING - 2 SHIELDS	1
8993009311	3	MPB0017	REAR ENDPLATE	1
8993009211	E	MPA0994	Cylinder and O-ring Kit	
	4	MPA0005	CYLINDER ASSEMBLY	1
	5	MPA0042	5 mm x 2.0 mm O-RING	1
8993017711	J	MPA0801	Rotor, Vanes and Key Kit	
	6	MPB0005	MACHINED ROTOR	1
	7	MPA0010	VANE	5
	8	MPA0041	3 mm x 13 mm WOODRUFF KEY	1
8993009411	9	MPB0016	FRONT ENDPLATE	1
8993019811	H	MPA0799	Endplate Bearing Kit	
	10	MPA0019	12 x 28 x 8 BEARING - 2 SHIELDS	1
8993007911	F	MPA0993	Lock ring and O-ring Kit	
	11	MPA0045	39.4 mm x 3.1 mm O-RING	1
	12	MPA0001	LOCK RING	1
8991621311		MPA 2190	Shaft Balancer Kit	
	13	MPB0102	3 mm (1/8 in.) ORBIT AirSHIELD™ SHAFT BALANCER	1
	14	MPA0122	FILTER	1
	15	MPA0121	CHECK VALVE	1
	16	MPA0120	RETAINER	1
8993019611	B	MPA0807	ROS/OS Spindle Bearing Kit	
	17	MPA0107	10.0 mm RETAINING RING	1
	18	MPA0162	10 x 22 x 6 BEARING - NO SEAL/SHIELDS	1
	19	MPA0196	SPACER 22.0 x 18.0 x 0.1	1
	20	MPA0161	10 x 22 x 6 BEARING - 1 SEAL	1
	21	MPA0108	SHIM 10.1 ID x 14.0 OD x 0.2 THK	1
	22	MPA0126	BELLEVILLE WASHER 12.1 ID x 22.4 OD x 1.86 HT	1
23	MPA0177	22.2 mm RETAINING RING	1	
8993015811	24	MPA0163	SPINDLE ASSEMBLY	1
8991601011	25	MPA0080	SPACER (0,4 mm thick)	1
	26	MPA0079	SPACER (0,2 mm thick)	OPT.
8991610711	-	MPA1730	Lever Kit 3,0 mm orbit	
	27	MPA1697	LEVER	1
	28	MPA0031	PIN	1
8993013811	29	MPA0288	65 mm (2 1/2 in.) GRIP (Optional)	OPT.
		MPA0289	70 mm (2 3/4 in.) GRIP (Optional)	OPT.
8993013511		MPA0290	75 mm (3 in.) GRIP (Standard)	1
8993019011	I	MPA0800	Speed Valve Kit	
	30	MPA0015	VALVE SLEEVE	1

	31	MPA0768	SCREW	4
8991800411	32	MPA0076	WASHER	4
8991606811	33	MPA0743	HOUSING	1
8991600711	34	MPC0162	SEAL	1
	I	MPA0800	Speed Valve Kit	
8993019011	35	MPA0008	VALVE STEM ASSEMBLY	1
	36	MPA0043	9 mm x 1.5 mm O-RING	1
	37	MPB0014	SPEED CONTROL	1
	38	MPA0039	INTERNAL RETAINING RING	1
8991600411	39	MPC0018	MINI PAD SUPPORT ASSEMBLY	2
	K	MPA1672	Screw kit	
8993015511	40	MPA0766	SCREW	4
8991600811	41	MPB0101	PAD BACKING	1
	K	MPA1672	Screw kit	
8993015511	42	MPA0767	SCREW	4
	43	MPA0078	SCREW	1
8295340111	44	-	Backing pad 75 x 100 mm 53 H velcro medium	1
8991608011	45	MPA0864	2.5 mm HEX WRENCH (supplied with each tool)	1
	A	MPA0805	10 000 rpm Muffler Kit	
8993017211	46	MPA0032	MUFFLER	2
	47	MPA0038	PLATE	1
	48	MPA0166	MUFFLER HOUSING	1
	C	MPA0798	Air Inlet Kit	
8993018811	49	MPA0009	VALVE SEAT	1
	50	MPA0007	VALVE	1
	51	MPA0014	VALVE SPRING	1
	52	MPA0013	1/4-18 NPT INLET BUSHING ASSEMBLY	1
8991600611	53	MPB0069	SNAP-IN VACUUM COVER PLATE	1
8991600511	54	MPC0017	SNAP-IN EXHAUST ADAPTER	1
8991600911	55	MPA0722	SGV RETAINER	1
8993008911	56	MPA0044	14.0 x 1.5 O-RING	2
	D	MPA0932	SGV Swivel Fitting 28 mm Kit	
8993011311	57	MPA0410	28 mm (1 in.) HOSE SuperVAC™ SGV SWIVEL EXHAUST ASSEMBLY (Standard for SGV)	1
	59	MPA0778	28mm (1 in.) HOSE SEAL	1
	-	MPA0858	SGV Swivel Fitting 19 mm Kit	OPT.
8993011411	58	MPA0409	19 mm (¾ in.) HOSE SuperVAC™ SGV SWIVEL EXHAUST ASSEMBLY (Optional for SGV)	1
	60	MPA0854	19mm (¾ in.) HOSE SEAL	1

	61	MPA0856	19mm (3/4 in.) HOSE SEAL TAG	OPT.
		MPA0931	28mm (1 in.) HOSE SEAL TAG	1
8993006711	62	MPA0412	Ø 28 mm (1 in.) VAC HOSE TO Ø 28 mm (1 in.) DOUBLE BAG FITTING AND AIRLINE ASSY. (Std for SGV) INCL.: MPA0034 Ø 28 mm (1 in) x 1.8 m (6 ft) Vacuum Hose, MPB0123 Ø 28 mm (1 in) Hose to Double Bag Vacuum Fitting, MPA0033 Ø 6.3 mm (¼ in) x 1.8 m (6 ft) Airline with Fittings, MPA0027 Bungee for Ø 6.3 mm (¼ in.) Airline & Ø 28 mm (1 in.) Vacuum Hose (5)	1
8993041111		MPA0411	Ø 19 mm (¾ in.) VAC HOSE TO Ø 19 mm (¾ in.) DOUBLE BAG FITTING AND AIRLINE ASSEMBLY (Opt. for SGV) INCL.: MPA0200 Ø 19 mm (¾ in) x 1.5 m (5 ft) Vacuum Hose, MPB0133 Ø 19 mm (¾ in) Hose To Double Bag Vacuum Fitting, MPA0302 Ø 6.3 mm (¼ in) x 1.5 m (5 ft) Airline with Fittings, MPA0301 Bungee for Ø 6.3 mm (¼ in) Airline & Ø 19 mm (¾ in) Vacuum Hose (5)	OPT.
8993306711	63	MPA0300	Ø 19 mm (¾ in.) VAC HOSE TO Ø 19 mm (¾ in.) x Ø 28 mm (1 in.) HOSE ADAPTER COUPLING AND AIRLINE ASSEMBLY INCLUDES: MPA0200 Ø 19 mm (¾ in.) x 1.5 m (5 ft.) Vacuum Hose, MPB0088 19 mm (¾ in.) Hose x 28 mm (1 in.) Hose Adapter, MPA0302 Ø 6.3 mm (¼ in.) x 1.5 m (5 ft.) Airline with Fittings, MPA0301 Bungee for Ø 6.3 mm (¼ in.) Airline & Ø 19 mm (¾ in.) Vacuum Hose (5)	1
	G	MPA1239	CV Swivel Fitting Kit 19 mm	
8991600211	64	MPA0298	SuperVAC™ CV 19 mm (¾ in.) CV SWIVEL EXHAUST ASSEMBLY	1
	66	MPA0048	M5 x 0.8 FLANGED NUT	1
	67	MPA0047	M5 WASHER	1
	68	MPA0769	HEX SOCKET BUTTON HEAD MACHINE SCREW M5 x 10	1
8991600311	65	MPA0092	SuperVAC™ CV 28 mm (1 in.) CV SWIVEL EXHAUST ASSEMBLY	OPT.
8993010211	66	MPA0048	M5 x 0.8 FLANGED NUT	1
8993009911	67	MPA0047	M5 WASHER	1
8993010111	68	MPA0769	HEX SOCKET BUTTON HEAD MACHINE SCREW M5 x 10	1
8993206011	69	MPA0658	VACUUM BAG	1
8993206511	70	MPA0465	10 PACK OF VACUUM BAG INSERTS	1

