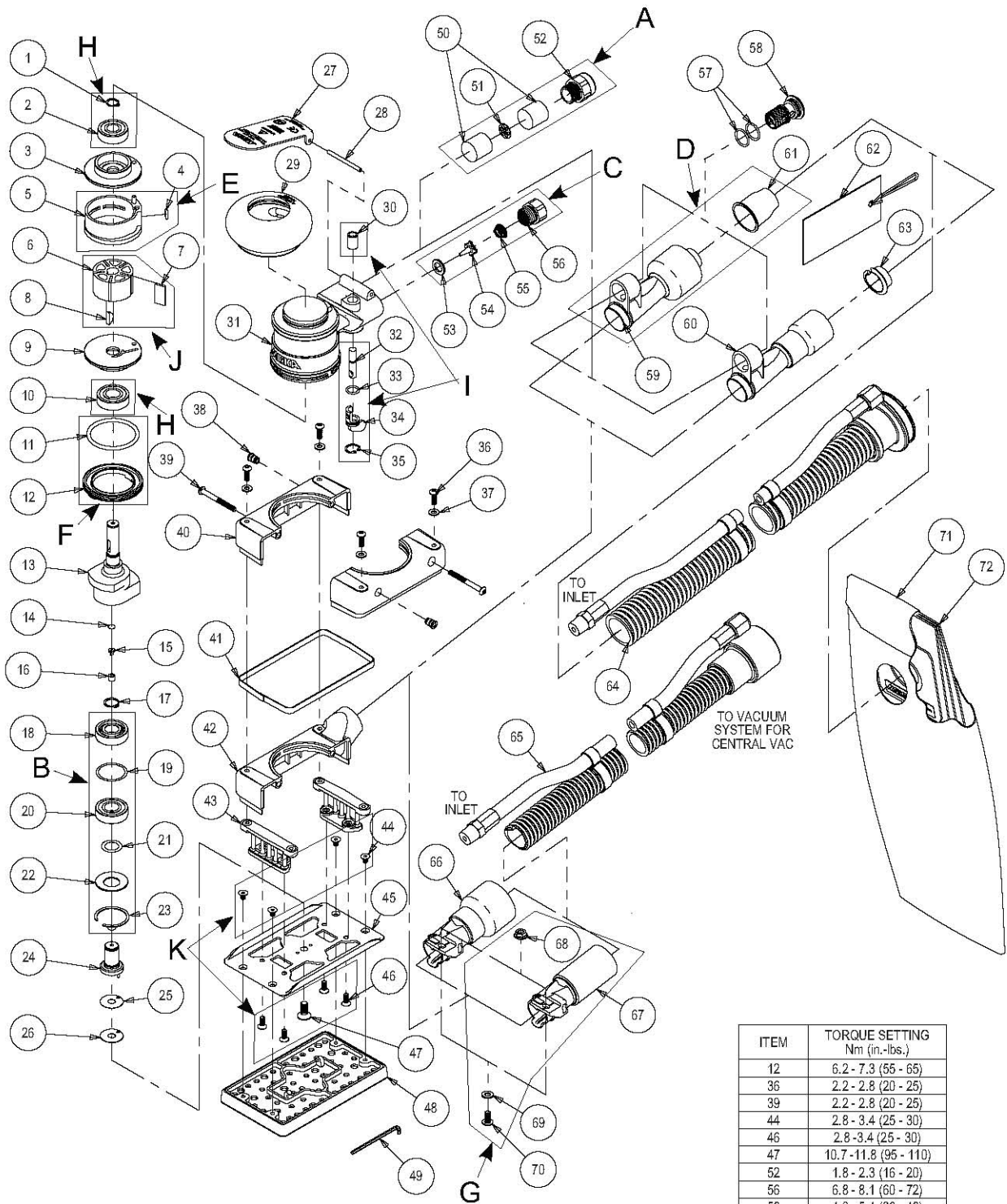


# Exploded view for OS 81 x 133 mm



ITEM	TORQUE SETTING Nm (in.-lbs.)
12	6.2 - 7.3 (55 - 65)
36	2.2 - 2.8 (20 - 25)
39	2.2 - 2.8 (20 - 25)
44	2.8 - 3.4 (25 - 30)
46	2.8 - 3.4 (25 - 30)
47	10.7 - 11.8 (95 - 110)
52	1.8 - 2.3 (16 - 20)
56	6.8 - 8.1 (60 - 72)
58	4.0 - 5.4 (36 - 48)
70	3.4 - 3.9 (30 - 35)

Mirka code	Item	P/N	Description	Qty.
8993019811	H	<b>MPA0799</b>	<b>Endplate Bearing Kit</b>	
	1	MPA0040	EXTERNAL RETAINING RING	1
	2	MPA0021	10 X 26 X 8 BEARING - 2 SHIELDS	1
8993009311	3	MPB0017	REAR ENDPLATE	1
8993009211	E	<b>MPA0994</b>	<b>Cylinder and O-ring Kit</b>	
	4	MPA0042	5 mm x 2.0 mm O-RING	1
	5	MPA0005	CYLINDER ASSEMBLY	1
8993017711	J	<b>MPA0801</b>	<b>Rotor, Vanes and Key Kit</b>	
	6	MPB0005	MACHINED ROTOR	1
	7	MPA0010	VANE	5
	8	MPA0041	3 mm x 13 mm WOODRUFF KEY	1
8993009411	9	MPB0016	FRONT ENDPLATE	1
8993019811	H	<b>MPA0799</b>	<b>Endplate Bearing Kit</b>	
	10	MPA0019	12 x 28 x 8 BEARING - 2 SHIELDS	1
8993007911	F	<b>MPA0993</b>	<b>Lock ring and O-ring Kit</b>	
	11	MPA0045	39.4 mm x 3.1 mm O-RING	1
	12	MPA0001	LOCK RING	1
8991621311		<b>MPA2191</b>	<b>Shaft Balancer Kit</b>	
	13	MPB0179	3 mm (1/8 in.) ORBIT AirSHIELD™ SHAFT BALANCER	1
	14	MPA0122	FILTER	1
	15	MPA0121	CHECK VALVE	1
	16	MPA0120	RETAINER	1
8993019411	B	<b>MPA0806</b>	<b>OS Spindle Bearing Kit</b>	
	17	MPA0090	RETAINING RING	1
	18	MPA0035	BEARING	1
	19	MPA0193	SHIM	1
	20	MPA0020	BEARING	1
	21	MPA0016	SHIM	1
	22	MPA0017	WASHER	1
	23	MPA0018	RETAINING RING	1
	24	MPA0113	SPINDLE ASSEMBLY	1
	25	MPA0079	SPACER (0,2 mm thick)	OPT.
8991601011	26	MPA0080	SPACER (0,4 mm thick)	1
8991610711	-	<b>MPA1730</b>	<b>Lever Kit 3,0 mm orbit</b>	
	27	MPA1697	LEVER	1
	28	MPA0031	PIN	1
8993013811	29	MPA0288	65 mm (2 1/2 in.) GRIP (Optional)	OPT.
		MPA0289	70 mm (2 3/4 in.) GRIP (Optional)	OPT.
8993013511		MPA0290	75 mm (3 in.) GRIP (Standard))	1
8993019011	I	<b>MPA0800</b>	<b>Speed Valve Kit</b>	
	30	MPA0015	VALVE SLEEVE	1

8993006811	31	MPA0227	HOUSING	1
	<b>I</b>	<b>MPA0800</b>	<b>Speed Valve Kit</b>	
	32	MPA0008	VALVE STEM ASSEMBLY	1
<b>8993019011</b>	33	MPA0043	9 mm x 1.5 mm O-RING	1
	34	MPB0014	SPEED CONTROL	1
	35	MPA0039	INTERNAL RETAINING RING	1
	36	MPA0768	SCREW	4
8991800411	37	MPA0076	WASHER	4
8991800511	38	MPA0071	THREADED INSERT	2
8991800611	39	MPA0770	SCREW	2
	40	MPD0004	SHROUD (Right Hand and NV Left Hand)	2
8991800311	41	MPA0444	SHROUD SEAL	1
8991800811	42	MPD0005	CV/SGV SHROUD	1
8991608911	43	MPC0089	PAD SUPPORT ASSEMBLY	2
<b>8993015511</b>	<b>K</b>	<b>MPA1672</b>	<b>Screw kit</b>	
	44	MPA0766	SCREW	4
8991800211	45	MPC0115	PAD BACKING	1
<b>8993015511</b>	<b>K</b>	<b>MPA1672</b>	<b>Screw kit</b>	
	46	MPA0767	SCREW	4
	47	MPA0078	SCREW	1
8295350111	48	-	Backing pad 81 x 133 mm 54 H velcro medium	1
8991608011	49	MPA0864	2.5 mm HEX WRENCH (supplied with each tool)	1
<b>8993017211</b>	<b>A</b>	<b>MPA0805</b>	<b>10 000 rpm Muffler Kit</b>	
	50	MPA0032	MUFFLER	2
	51	MPA0038	PLATE	1
	52	MPA0166	MUFFLER HOUSING	1
<b>8993018811</b>	<b>C</b>	<b>MPA0798</b>	<b>Air Inlet Kit</b>	
	53	MPA0009	VALVE SEAT	1
	54	MPA0007	VALVE	1
	55	MPA0014	VALVE SPRING	1
	56	MPA0013	1/4-18 NPT INLET BUSHING ASSEMBLY	1
8993008911	57	MPA0044	14.0 x 1.5 O-RING	2
8991600911	58	MPA0722	SGV RETAINER	1
<b>8993011311</b>	<b>D</b>	<b>MPA0932</b>	<b>SGV Swivel Fitting 28 mm Kit</b>	
	59	MPA0410	28 mm (1 in.) HOSE SuperVAC™ SGV SWIVEL EXHAUST ASSEMBLY (Standard for SGV)	1
	61	MPA0778	28mm (1 in.) HOSE SEAL	1

	-	<b>MPA0858</b>	<b>SGV Swivel Fitting 19 mm Kit</b>		OPT.
8993011411	60	MPA0409	19 mm (¾ in.) HOSE SuperVAC™ SGV SWIVEL EXHAUST ASSEMBLY (Optional for SGV)		1
	63	MPA0854	19mm (3/4 in.) HOSE SEAL		1
	62	MPA0856	19mm (3/4 in.) HOSE SEAL TAG		OPT.
		MPA0931	28mm (1 in.) HOSE SEAL TAG		1
<b>8993006711</b>	64	MPA0412	Ø 28 mm (1 in.) VAC HOSE TO Ø 28 mm (1 in.) DOUBLE BAG FITTING AND AIRLINE ASSY. (Std for SGV) INCL.: MPA0034 Ø 28 mm (1 in) x 1.8 m (6 ft) Vacuum Hose, MPB0123 Ø 28 mm (1 in) Hose to Double Bag Vacuum Fitting, MPA0033 Ø 6.3 mm (¼ in) x 1.8 m (6 ft) Airline with Fittings, MPA0027 Bungee for Ø 6.3 mm (¼ in.) Airline & Ø 28 mm (1 in.) Vacuum Hose (5)		1
8993041111		MPA0411	Ø 19 mm (¾ in.) VAC HOSE TO Ø 19 mm (¾ in.) DOUBLE BAG FITTING AND AIRLINE ASSEMBLY (Opt. for SGV) INCL.: MPA0200 Ø 19 mm (¾ in) x 1.5 m (5 ft) Vacuum Hose, MPB0133 Ø 19 mm (¾ in) Hose To Double Bag Vacuum Fitting, MPA0302 Ø 6.3 mm (¼ in) x 1.5 m (5 ft) Airline with Fittings, MPA0301 Bungee for Ø 6.3 mm (¼ in) Airline & Ø 19 mm (¾ in) Vacuum Hose (5)		OPT.
<b>8993306711</b>	65	MPA0300	Ø 19 mm (¾ in.) VAC HOSE TO Ø 19 mm (¾ in.) x Ø 28 mm (1 in.) HOSE ADAPTER COUPLING AND AIRLINE ASSEMBLY INCLUDES: MPA0200 Ø 19 mm (¾ in.) x 1.5 m (5 ft.) Vacuum Hose, MPB0088 19 mm (¾ in.) Hose x 28 mm (1 in.) Hose Adapter, MPA0302 Ø 6.3 mm (¼ in.) x 1.5 m (5 ft.) Airline with Fittings, MPA0301 Bungee for Ø 6.3 mm (¼ in.) Airline & Ø 19 mm (¾ in.) Vacuum Hose (5)		1
8991600311	66	MPA0092	SuperVAC™ CV 28 mm (1 in.) CV SWIVEL EXHAUST ASSEMBLY		OPT.
		<b>G</b>	<b>MPA1239</b>	<b>CV Swivel Fitting Kit 19 mm</b>	
	67	MPA0298	SuperVAC™ CV 19 mm (¾ in.) CV SWIVEL EXHAUST ASSEMBLY		1
<b>8991600211</b>	68	MPA0048	M5 x 0.8 FLANGED NUT		1
	69	MPA0047	M5 WASHER		1
	70	MPA0769	HEX SOCKET BUTTON HEAD MACHINE SCREW M5 x 10		1
8993010211	68	MPA0048	M5 x 0.8 FLANGED NUT		1
8993009911	69	MPA0047	M5 WASHER		1
8993010111	70	MPA0769	HEX SOCKET BUTTON HEAD MACHINE SCREW M5 x 10		1
<b>8993206011</b>	71	MPA0658	VACUUM BAG		1
<b>8993206511</b>	72	MPA0465	10 PACK OF VACUUM BAG INSERTS		1

